



B.M. MACCHINE UTENSILI s.r.l.

Via Edmondo De Amicis, 146 - 10093 Collegno (TO) - ITALY

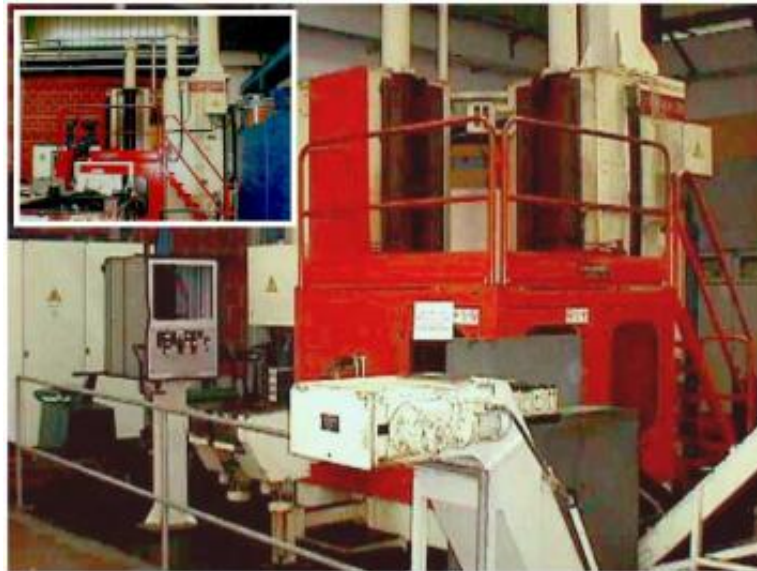
Tel: (0039) 011-403.11.24 / 011-403.15.79 - Fax: (0039) 011 403.13.28

www.bmtorino.it - bm@bmtorino.it

IT 07417070013

VARINELLI BVEE90-R16/2000/500

Code 2998



BROACHING MACHINE

BROCHADORA

| External CNC SIEMENS | Type | Tipo | Exteriores CNC SIEMENS |
|------------------------------------------|------------------------------|------------|---------------------------------------------|
| Max. travel | 2000 mm | | Recorrido max. |
| Max. working capacity | 16 Ton | | Esfuerzo max. de tracción |
| Max. workpiece diameter | 500 mm | | Diámetro max. de la pieza |
| Cutting speed | 16 - 24 m/1' | | Velocidad de trabajo |
| Return speed | 24 m/1' | | Velocidad de regreso |
| Power | 11 Kw | | Potencia |
| Weight | 23500 Kg | | Peso |
| Manufacture year | 1992 | | Año de fabricación |
| Overall dimensions | 3500 x 3500 x 6000 mm | | Dimensiones |
| Serial number | 6058 | | Matrícula |
| Automatic loader and rotary table | Accessories | Accesorios | Cargador automatico y mesa rotatoria |
| Duplex | Notes | Notas | Duplex |

The characteristics, data, measurements and photos provided here are not binding
 Características, datos, medidas y fotos no suponen compromiso ninguno